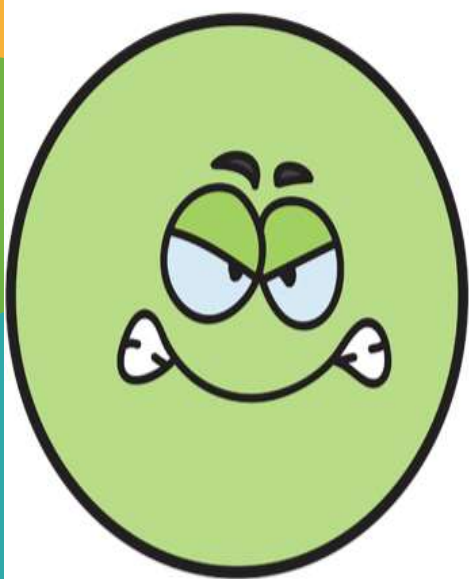




I am found at the end of question. 

A question is something you ask someone when you want to find something out.

Question can begin with What, Where, When, How, Why.



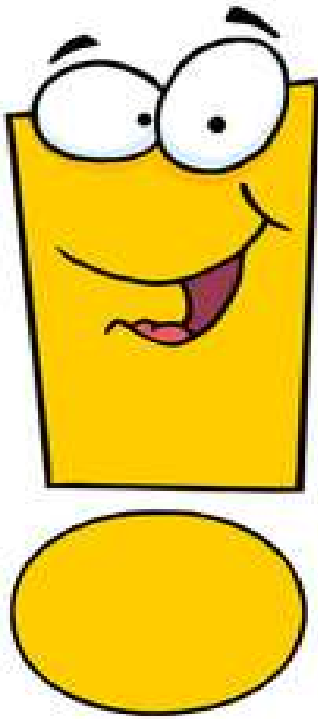
I am a full stop. 

Every time you see me you must stop

A Full stop is used to mark the end of sentence.



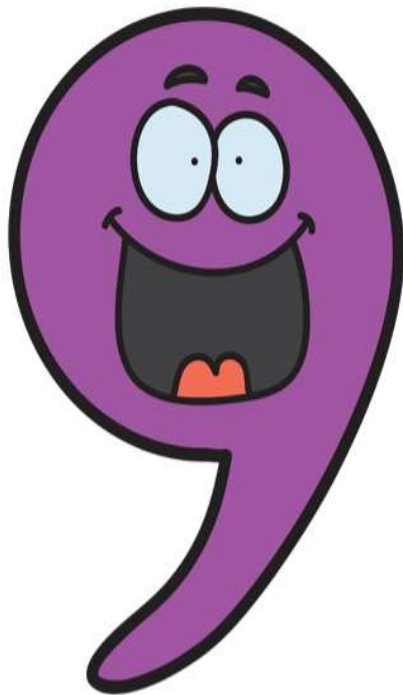
We had a lovely weekend.



#  
I am an exclamation mark. I am here to surprise you. ★

I show sense of urgency, excitement or a very strong feeling.

What a great story it was!



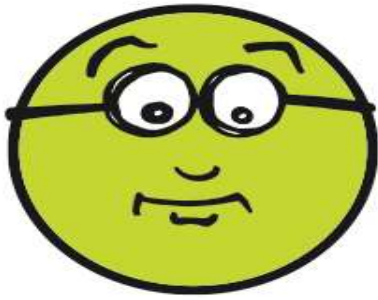
I am a Comma I look like a Hook.



Every time you look at me, slow down for a minute and look.

After watching cartoons, we will have lovely lunch.





We are a semi colon. We creates a break in a sentence, halfway between and are used in more formal writing. ★

It can sometimes be used to replace a full stop. It links two complete sentences and turns them into one.

A semi-colon can sometimes be used to replace a full stop. It links two complete sentences and turns them into one.

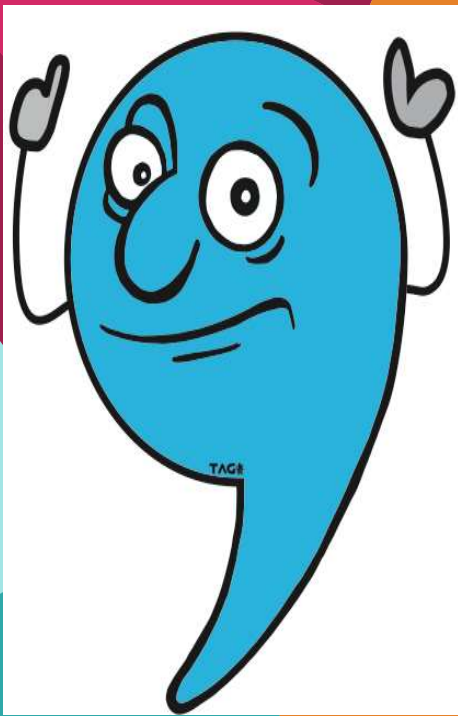


I am a hyphen. I look like a short line. ★

I am use to divide a word or compound word.

I have sixty-five dollars in my pocket.

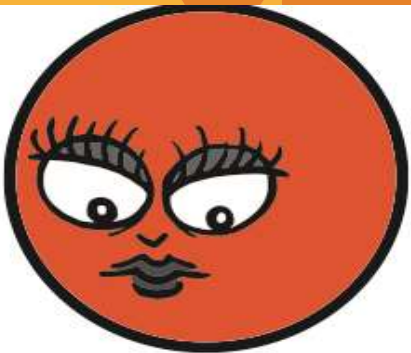




I am called apostrophe. I come above the line. ★

Every time you see me, I show the thing is either your's or mine. I'm also used to join subject and verb. ★

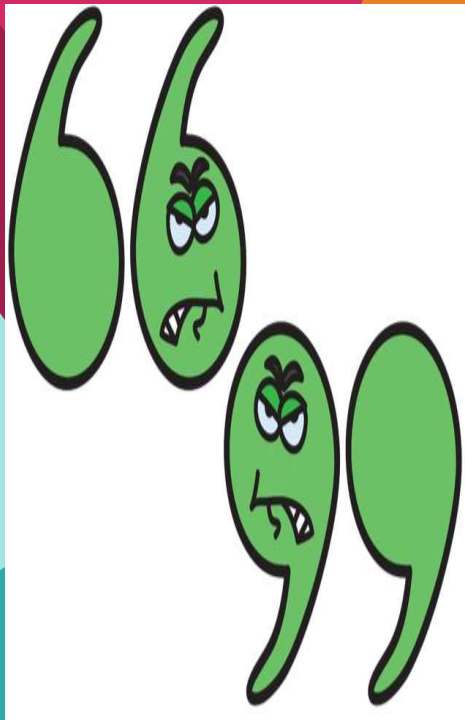
I've a big book. He'll see me today evening



We are called colon. We are used to introduce a list or when writing time. ★

It is also used before the part of the sentence that explains what has just been said. ★

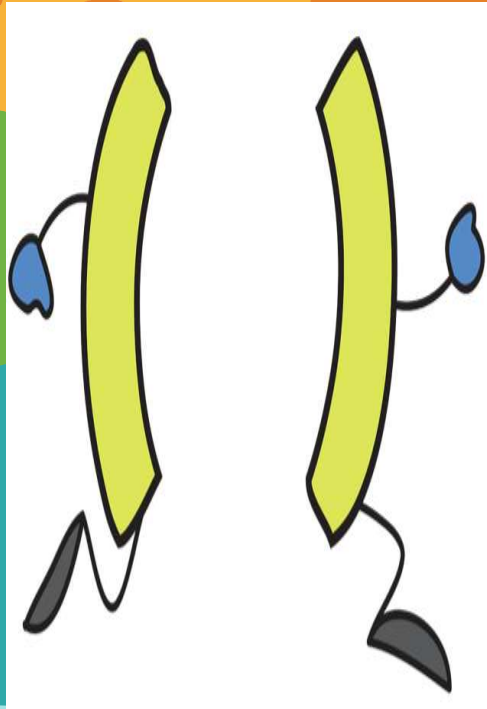
Shopping list: pen, card and paper.  
I will visit you at sharp 7:00 pm



We are called quotation marks.  
We come in a group of two.

We are always present where  
talking is going on. We are used  
to show someone's exact  
words.

He said "You are a wonderful teacher".



We are called parenthesis.

We are used to set off less  
important details that clarify  
something in more detail, but  
isn't necessary to the meaning  
of the sentence.